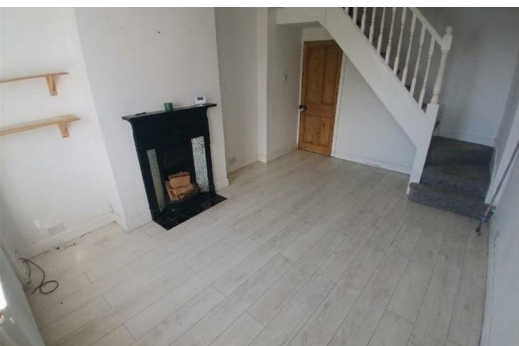




**Plough Hill Road, Nuneaton  
CV10 9NY  
£145,000**

**Freehold - Nuneaton & Bedworth Band: A - EPC: C**

\* NO UPWARD CHAIN\* Pointons Estate Agents are delighted to offer for sale this traditional two bedroom mid terrace residence on Plough Hill Road, Nuneaton, close to local shops, schools and further amenities. This home benefits from gas central heating and double glazing throughout, in brief the home comprises of a living room, kitchen, lobby and downstairs bathroom, to the first floor there are two double bedroom. Fore-garden to front and larger than average rear garden to rear, this property is offered with no chain with viewings strictly via the agent.



## Living Room

15'1" x 9'10" (4.60m x 3.00m)

With double glazed window to front, stairs to the first floor and radiator.

## Kitchen

10'6" x 9'10" (3.20m x 3.00m)

Fitted with a matching range of base and eye level units with worktop space over, stainless steel sink unit with single drainer, fitted four ring gas hob with oven and extractor hood over, space for appliances, radiator, newly fitted combination boiler as of 2026 and double glazed window to rear.

## Lobby

With storage cupboard with plumbing for washing machine and door to rear garden and bathroom.

## Bathroom

6'7" x 5'7" (2.00m x 1.70m)

Fitted with a panelled bath with shower over, WC, hand was basin with pedestal taps, radiator and obscure double glazed window to rear.

## Landing

With doors off to both bedrooms.

## Bedroom

11'10" x 9'10" (3.60m x 3.00m)

With double glazed window to front and radiator.

## Bedroom

10'6" x 9'10" (3.20m x 3.00m)

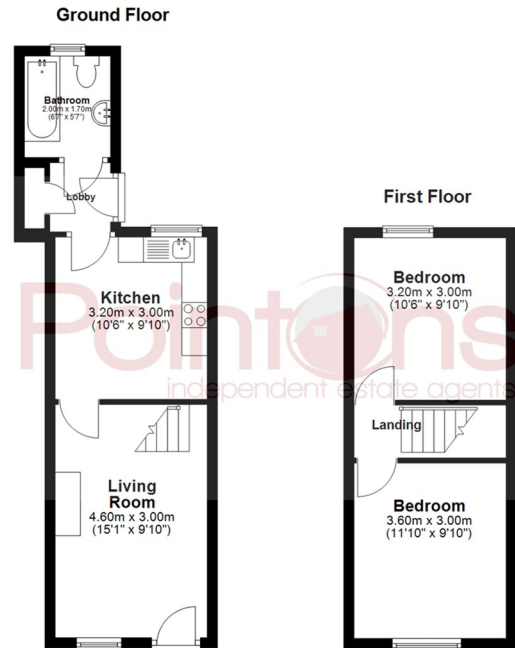
With double glazed window to rear and radiator.

## Outside

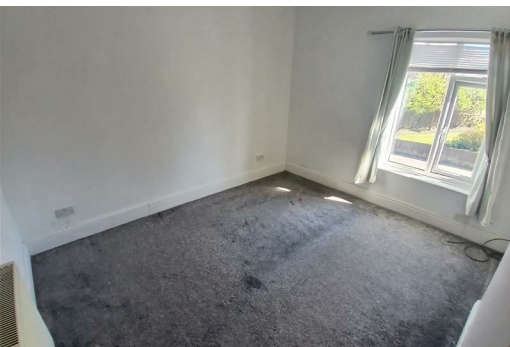
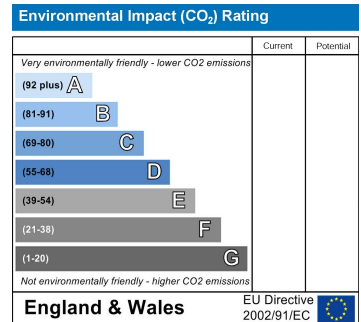
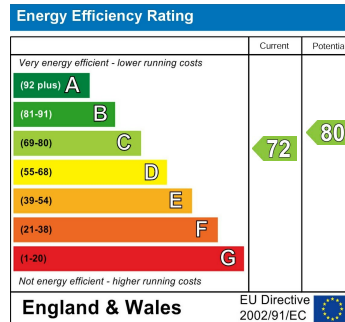
To front is a fore-garden, to rear an enclosed larger than average garden made up of patio, lawn and decked areas.

## General Information

Please Note: All fixtures & Fittings are excluded unless detailed in these particulars. None of the equipment mentioned in these particulars has been tested; purchasers should ensure the working order and general condition of any such items.



All floor plans are for a guide of the layout and not to scale  
Plan produced using PlanUp.



COVENTRY, CV1 2NT  
coventry@pointons-group.com  
024 7710 333  
Company No: 7359350

NUNEATON, CV11 4AL  
nuneaton@pointons-group.com  
024 7637 3300  
Company No: 6743033

ATHERSTONE, CV9 1AU  
atherstone@pointons-group.com  
01827 711911  
Company No: 81323250

